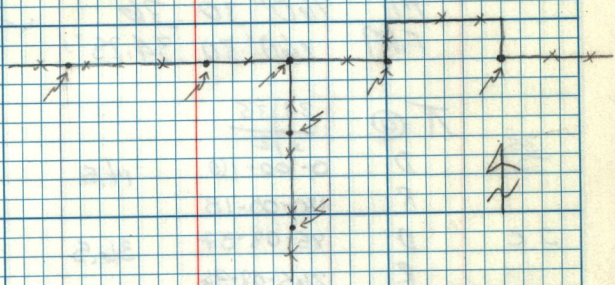


T @ 3A BS 2B

X Rt.	to Fence	CoR	335-32-40	25.5
"	"	P.I. E. Fence	0-07-40	187.8
"	"	P.I. E. Fence	2-41-40	604.8
"	"	East Fence		
"	"	So. Fence	64-19-20	96.8
"	"	So. Fence	74-40-30	290.2
"	"	W. Fence	192-55-30	78.2
"	"	W. Fence	186-13-50	278.4



FM 95 85-41 75-44-8 9
M